



Presidential 2013 INAUGURATION

Presented by:

Soumya Dey, P.E., PMP
Director of Research & Technology Transfer

Presented to:

**I-95 Corridor Coalition
Significant Events Response
Coordination Conference**

May 13, 2015

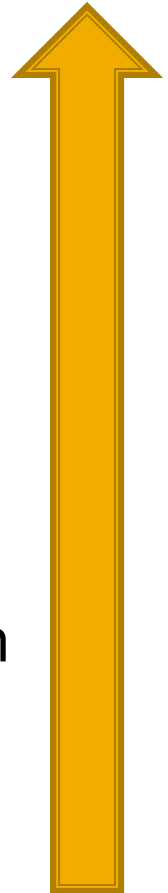


Presentation Outline

- Inauguration Planning Framework
- Inauguration Transportation Plan
 - Modal elements
- Day of Event Operation
 - Communication Flow
- Wrap-Up & Lessons Learned

DC – A Happening City

- Inauguration
- Papal Visit
- Presidential Funeral
- July 4th
- Cherry Blossom, Rolling Thunder
- Events – IMF/World Bank/G20
- Walks/Runs/Marathons
- Sporting Events
 - Nationals, DC United, Verizon Center, Legg Mason
- Convention Center
- University Events
- Festivals
- Block Parties



Level of complexity

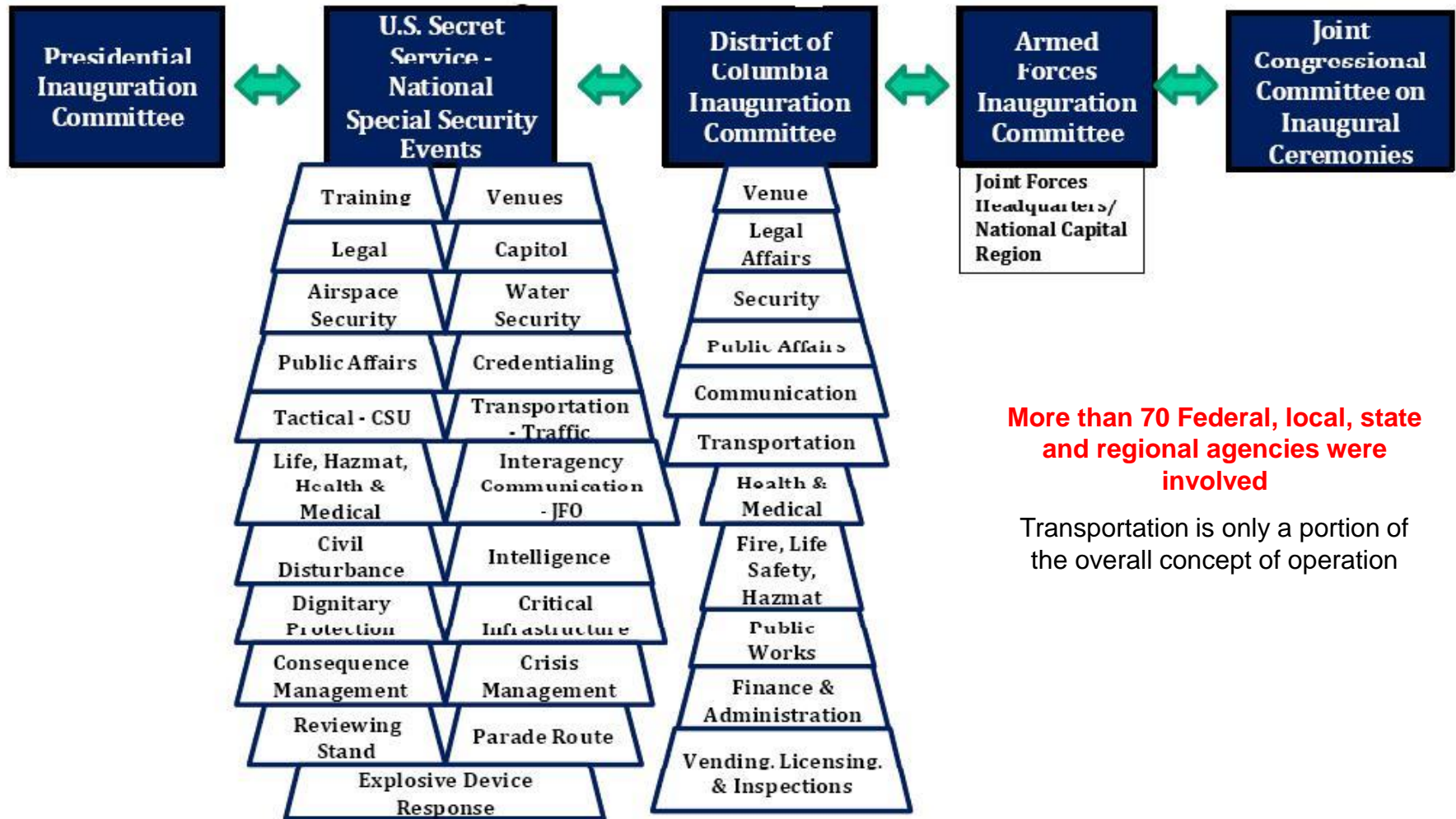
Crowds at Presidential Inauguration

Year	President	Attendance	Metro Ridership	Temp (° F)	Precipitation
1965	Johnson	1.2 M		38	1" snow on ground
1973	Nixon	0.3 M		42	None
1977	Carter	0.35 M		28	None
1981	Reagan	0.5 M		55	None
1989	Bush, H.W.	0.3 M		51	None
1993	Clinton	0.8 M	812,000	40	None
2001	Bush, W.	0.5 M	602,000	36	Rain/snow
2009	Obama	2.0 M	1,500,000	30	None

Adapted From: CNN & National Weather Service

President Reagan's second term had the lowest temperatures 7°F. Swearing-in was held indoors and the parade was cancelled.

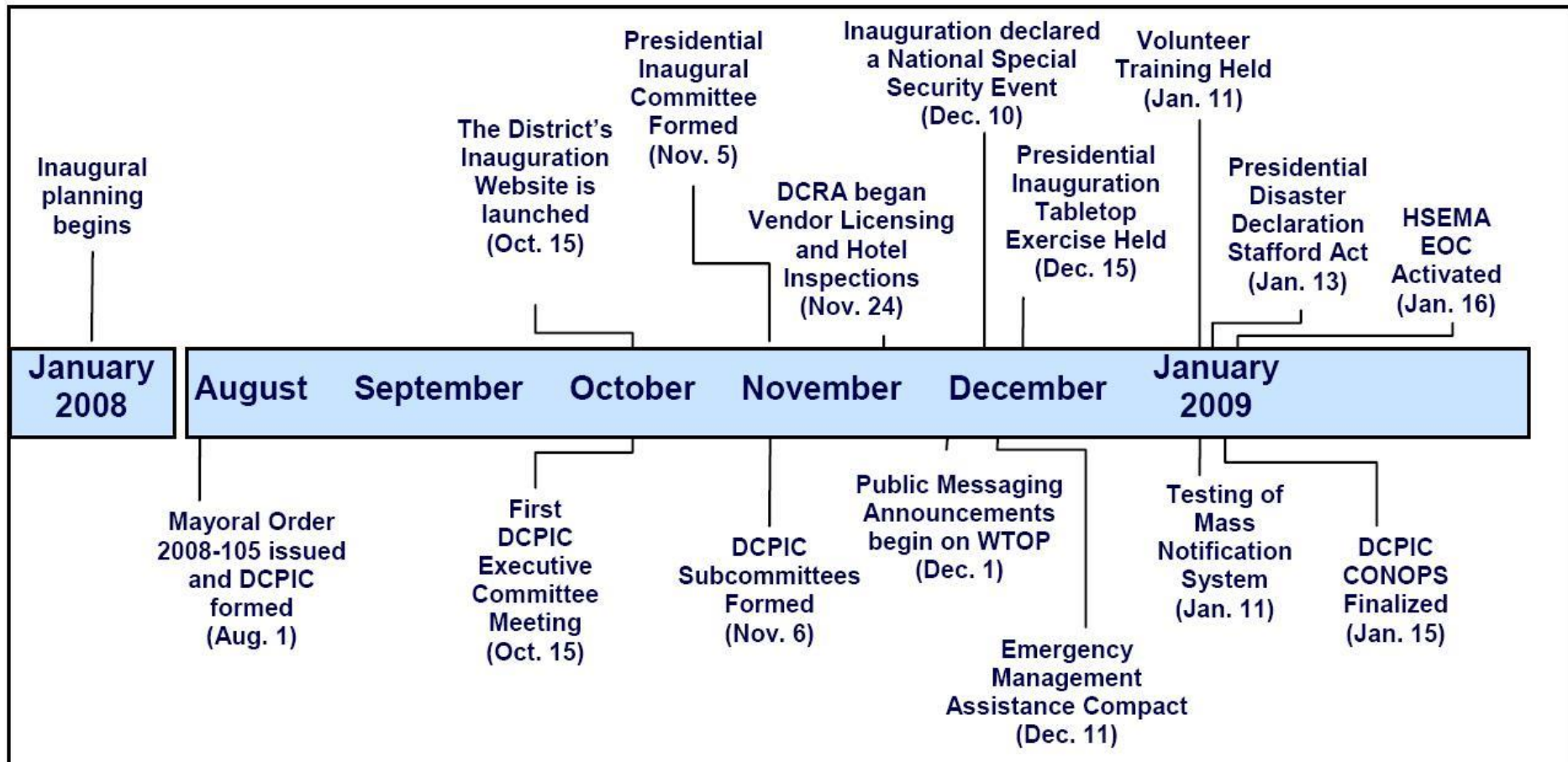
Inauguration Planning Structure



Designated as National Special Security Event (NSSE) – US Secret Service is the lead agency



Timeline for Planning Events (2009)



The timeline for 2013 was compressed since the plans for 2009 were already in place and anticipated crowds were lower.

Inauguration Related Events

Sat, 19 JAN



National Day of Service
National Mall



Children's Concert
Convention Center

Sun, 20 JAN



Wreath Laying
Arlington National Cemetery



Church Service



Oath of Office
White House



Reception
National Building Museum
John F. Kennedy Center

Mon, 21 JAN



Church Service
St John's, Lafayette Park



Swearing in Ceremony



Parade and Street Cordon



2 Inaugural Balls
Convention Center

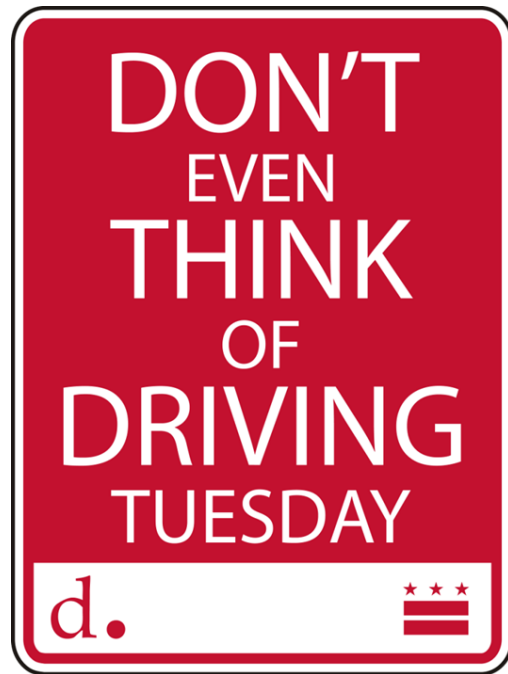
Tues, 22 JAN



National Prayer Service

Our Message

2009 INAUGURATION



2013 INAUGURATION

- Discouraged auto travel
- Road closures not as stringent as 2009
- All bridges except Memorial Bridge open to traffic

Multimodal Travel Options

- Walk
- Metrorail
- Metrobus
- Amtrak
- Commuter Rail
- Tour Bus/Charter Bus
- Taxi
- Bike
- Drive
- Water Taxi

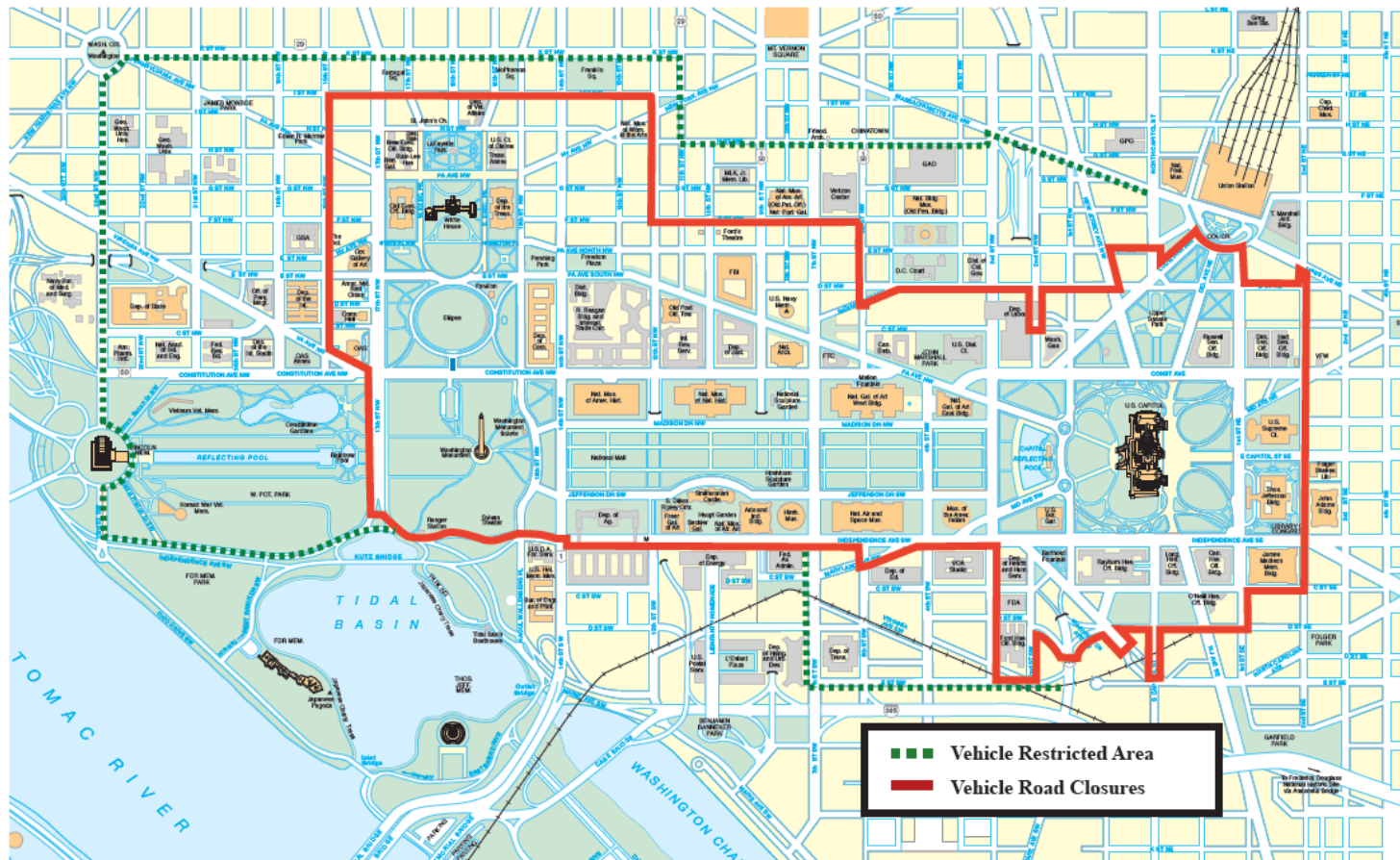
Vehicle Restrictions

Press Release

Vehicle Restrictions



U.S. Department of
Homeland Security
United States
Secret Service



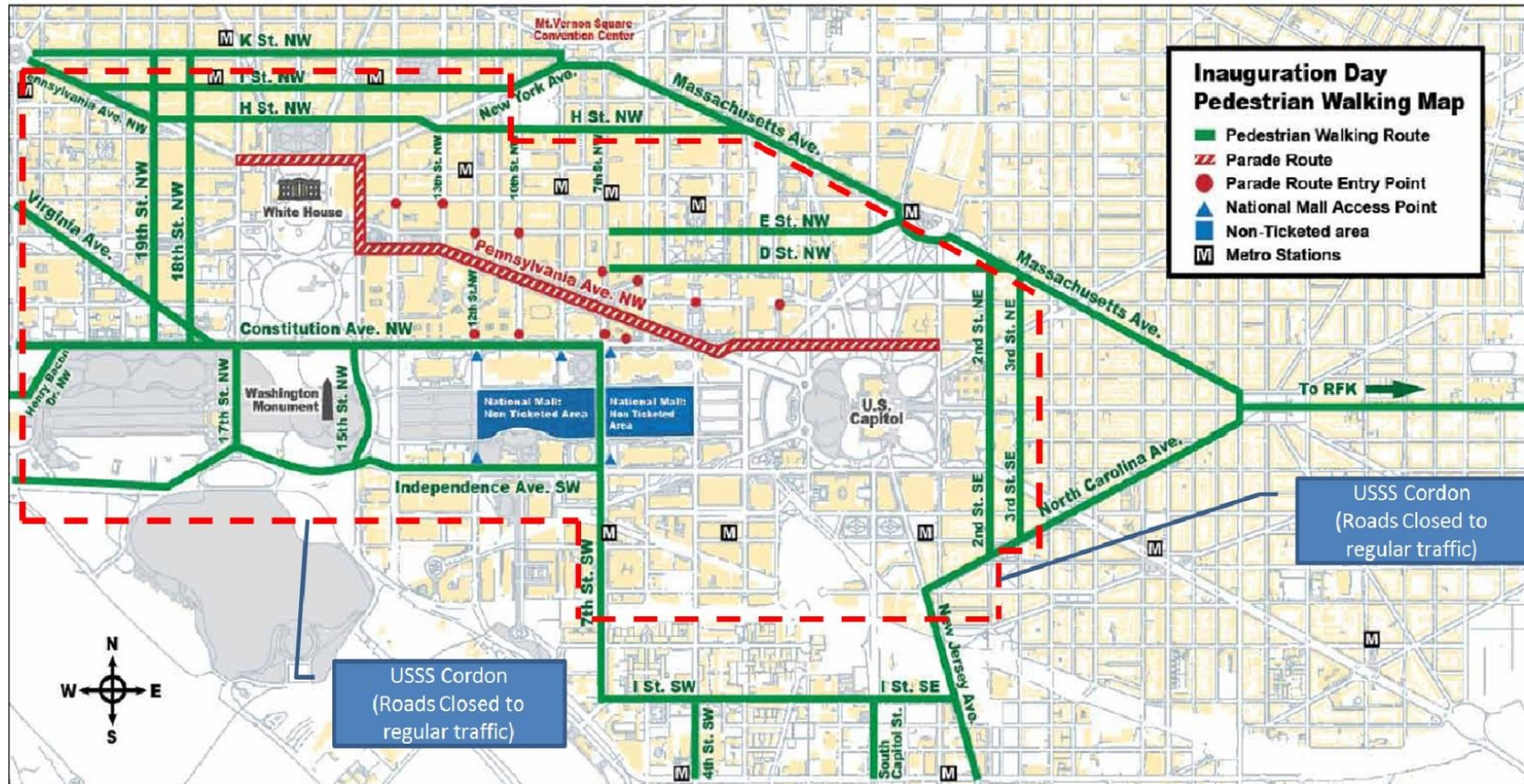
January 7, 2013



Walking Event



Pedestrian Walking Routes



Support large volumes of unfamiliar customers

Metro Rail



Daily Hours and Service

Saturday, January 19

Metrorail open 7 a.m. - 3 a.m. on a regular Saturday schedule. Off-peak fares in effect.

Metrobus service on a regular Saturday schedule.

Sunday, January 20

Metrorail open 7 a.m. - midnight on a regular Sunday schedule. Off-peak fares in effect.

Metrobus service on a regular Sunday schedule.

Monday (Inauguration Day)

Metrorail open 4 a.m. - 2 a.m. with rush-hour service until 9 p.m. Peak fares in effect until 9 p.m.

Rush+ service will not be in effect.

Metrobus service on a regular weekday A.M. rush hour schedule, followed by an early P.M. rush hour in the afternoon.

Last train times vary by station. Please check the train times posted at the stations you plan to use, or visit wmata.com/stations for details.

- Service from 4AM to 2AM the following day
- 17 consecutive hours of rush hour service
- Parking fees on exit
- Three station closures

Metro is accessible.



Metro Bus

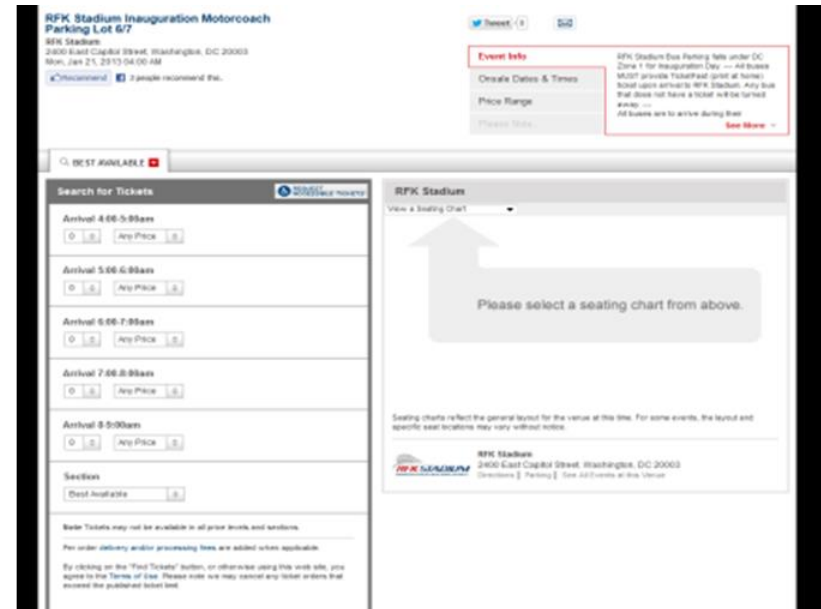
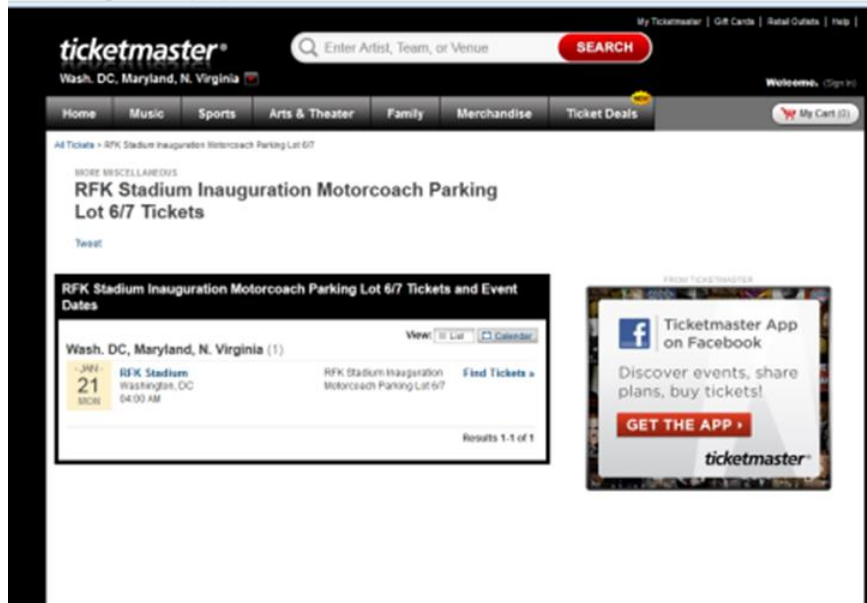


d.

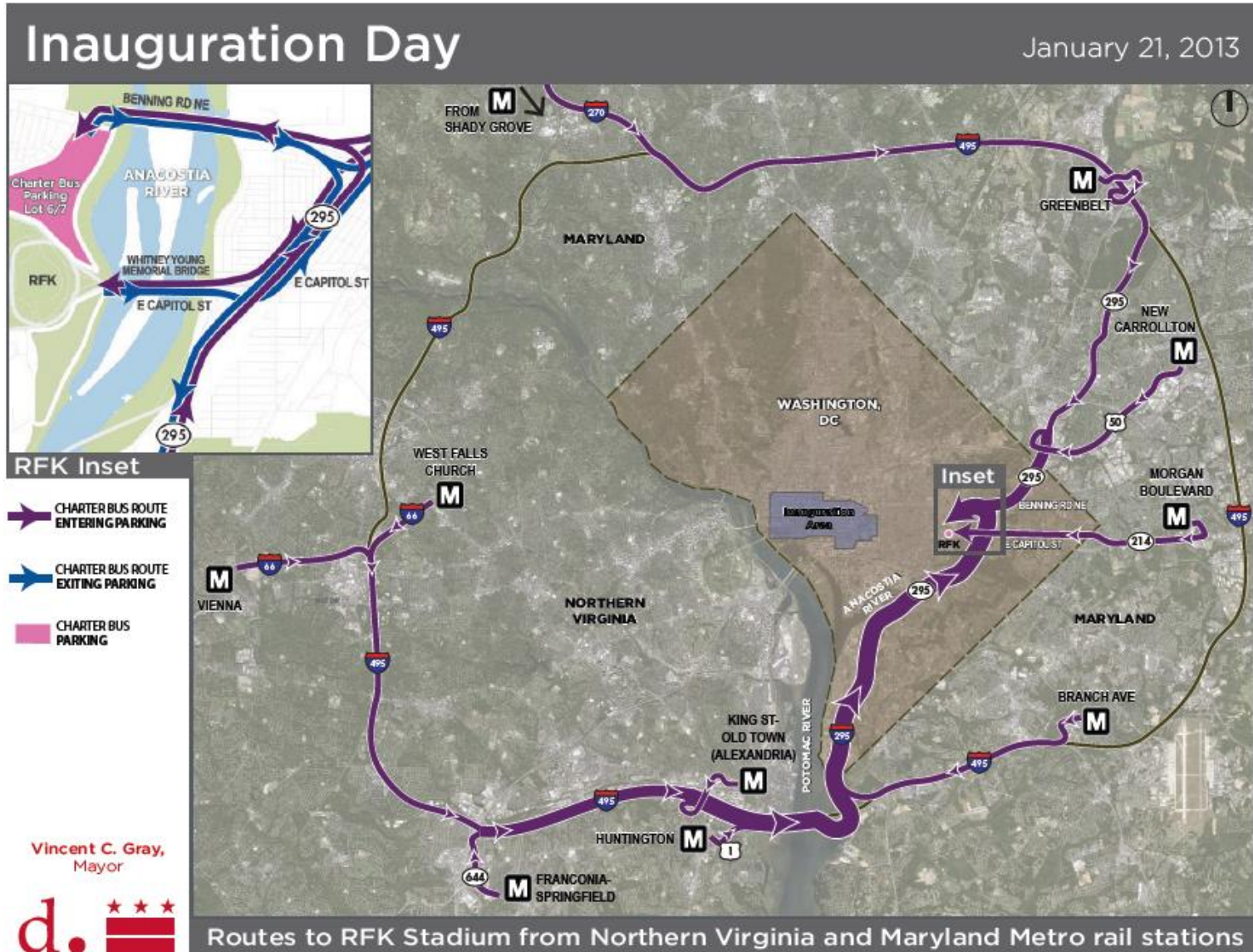


Reservations and Tracking

- The RFK online reservation system
- Tracking- DDOT will be collecting reservation and trip permit information weekly from off-street lot operators between December 14th and January 14th and daily between January 14th and January 21st.
- Parking reservation information and Trip permit information will be disseminated to stakeholders weekly.



Charter Bus Ingress/Egress Route



Shuttle Operation from RFK



Passenger Reunification

- All passengers were given wristbands identifying the lot the bus was parked in
- All buses were welcomed by a greeter
- Golf carts helped to move ADA population inside bus lots
- Lost Passenger Stations and Warming Stations to be setup along walking route and event site

Bike

- Capital Bikeshare (CaBi) operated two corals at two locations:
 - 17th and K Street NW (McPherson)
 - 12th and Independence SW (USDA)
- Personal bike parking at 16th and I Street NW
- 4,500 CaBi users; 300 personal bikes parked
- No lost bikes

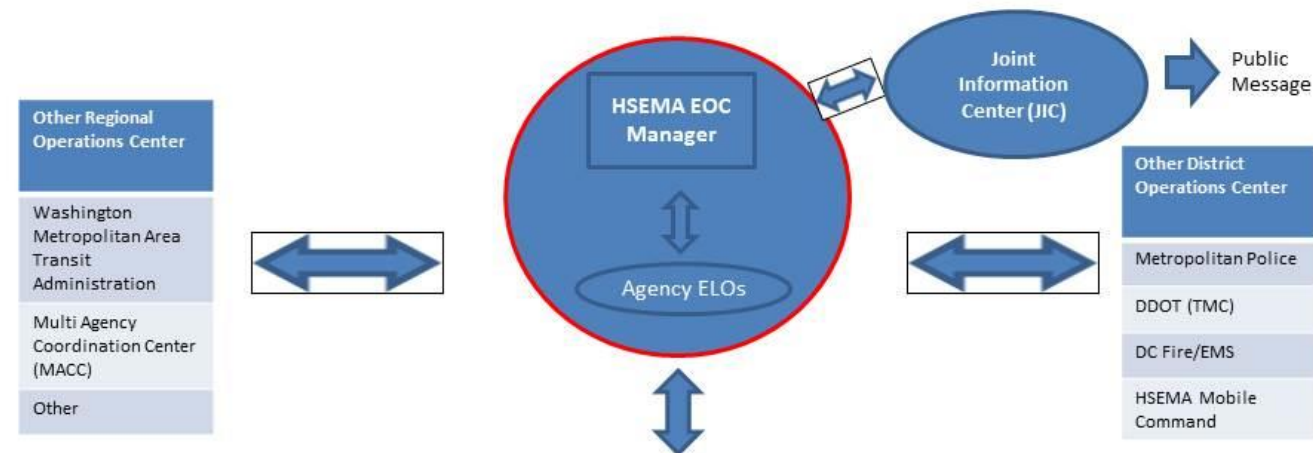


Taxis and Water Ferries

- Used as an alternative option instead of walking to site from RFK
- Coordinated with Taxi cab commission to establish special rate
- Water ferry moved regional residents from Alexandria, Va to District(45 mins one way)
- Needed to ensure a controlled environment through proper staffing



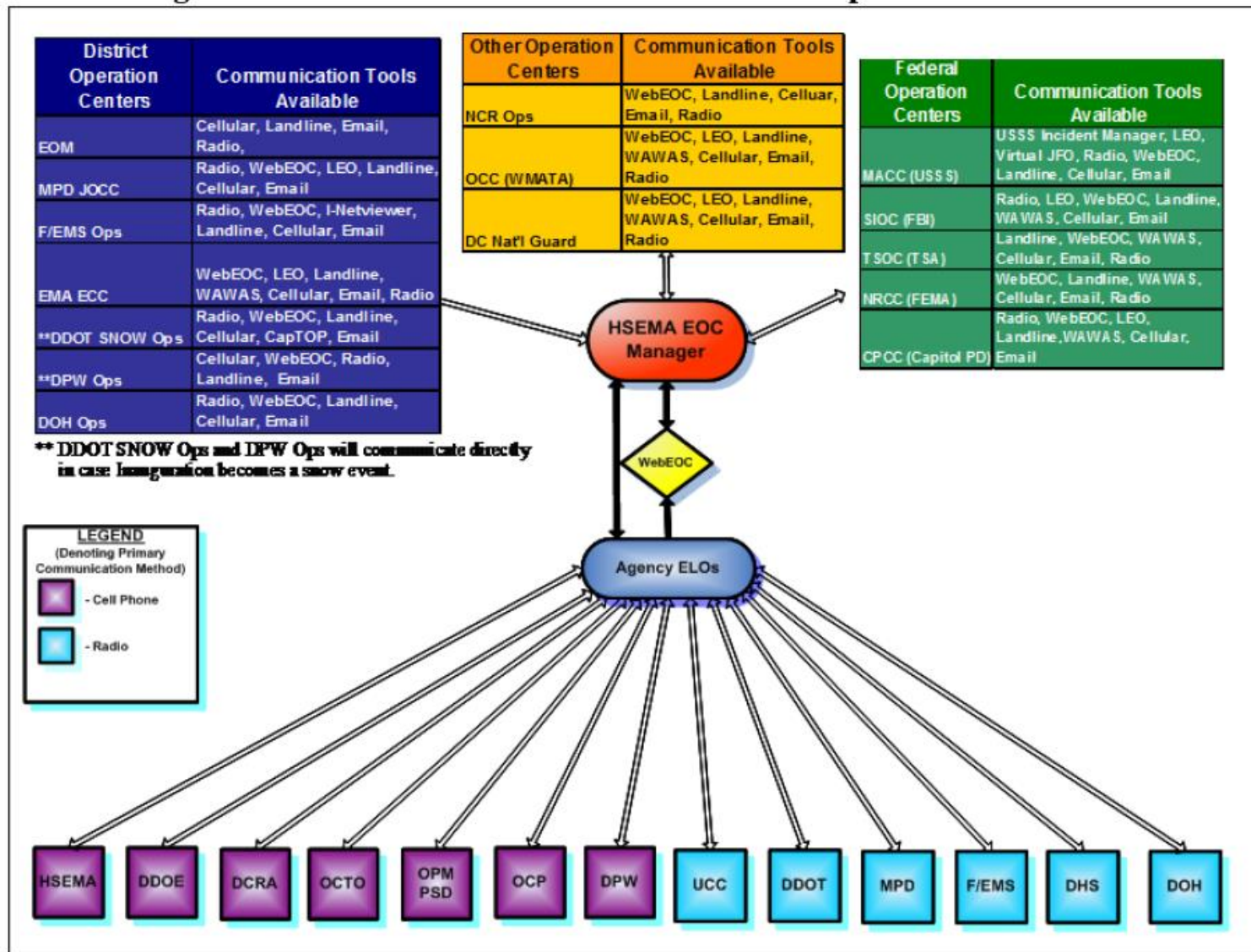
Day of Event Communication



Transportation/ Infrastructure	Utilities	Emergency Preparedness	Law Enforcement	Communication	Community Services	Other	Other
District DOT	Potomac Electric Power Company	DC Homeland Security and EMA (HSEMA)	Metropolitan Police Department	Executive Office of the Mayor	Red Cross	DC Fire and EMS	Civil Air Patrol
Virginia DOT	Washington Gas	Federal EMA (FEMA)	US Secret Service	Office of Chief Technology Officer	ServeDC	DC Department of Energy	US Coast Guard
Maryland DOT	DC Water	Maryland EMA (MEMA)	US Capitol Police	Office of Unified Communications	DC Department of Human Services	Environmental Protection Agency	US Marshall
Washington Metropolitan Area Transit Administration		Virginia Department of Emergency Management (VDEM)	US Park Police	DC Consumer and Regulatory Agency		DC Department of Health	DC National Guard
Amtrak		US Department of Homeland Security	FBI	Metropolitan Area Transportation Operations Coordination			Protective Services
Department of Public Works			VA State Police				

Sample Agencies at the Emergency Operations Center (EOC) at DC Emergency Management and Homeland Security Agency (HSEMA)

Information Flow



DDOT Roles & Responsibilities

- Repave Pennsylvania Avenue
- Remove (and reinstall) 25 signal poles, 88 signal heads and 76 bollards from the median of Pennsylvania Avenue
- Develop and execute tour bus management and operations plan
- Plan and implement curbside management plan
 - 5,000 decorative emergency no parking signs, 10,000 emergency no parking signs
- Install 450 Flags along parade route
- Fabricate and install tour bus and pedestrian way finding signs
- Participate in security sweep of transportation assets in secure perimeter
- Provide staffing for snow contingency plan
- Monitor traffic at 24X7 transportation management center (TMC)
- Provide staffing at various command centers including emergency liaison officers (ELO) at the EOC
- Control vehicular and pedestrian traffic with traffic control officers, school crossing guards and public space inspectors
- Respond to incidents using roadway operations patrol staff
- Support and implement street closures
- Coordinate traveler information dissemination through portable dynamic message signs
- Prepare and make real-time adjustments to signal timing plan
- Enforce public space moratorium
- Train and coordinate with DC National Guard and ServeDC and PIC volunteers

Lessons Learned

- Find Common Ground
- Develop the Plan Early
- Exercise the Plan
- Communicate a Common and Unified Message
- Manage Expectations
- Ensure Sufficient “Boots on the Ground”
- Learn from the Past
- De-conflict Modes

The World Watches – It's Our Opportunity to Shine!

